



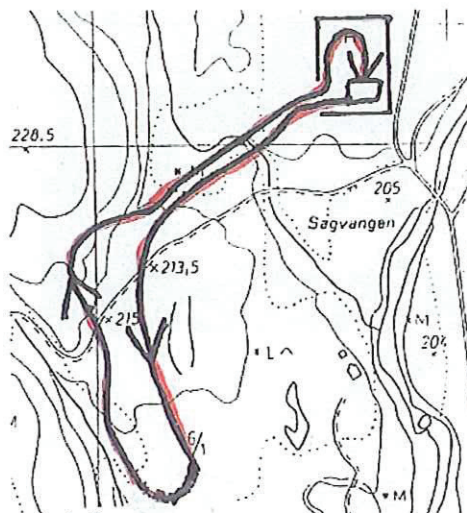
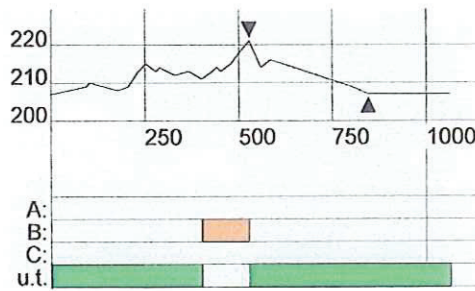
CERTIFICATE

OF FIS HOMOLOGATED CROSS-COUNTRY COURSE FIS CROSS-COUNTRY COMMITTEE



- (1) Registration Number: 03/18.01/1,0
 (2) Location of the competition site: Nes, Akershus
 (3) Organizer: Nes skianlegg
 (4) National Ski Association: Norwegian Ski Association
 (5) Contact person in the organizing committee: Rune Åslund
 (6) Homologation inspector: Hermod Bjørkestøl
 (7) Name of course: Nes 1 km
 (8) Description of course:

Course length:	1064 m	Height Difference (HD):	14 m	Lowest point:	207 m
Category:	D	Maximum Climb (MC):	11m	Highest point:	221 m
Competition Level:	COC	Total Climb (TC):	25m		



FIS Office

Jürg Capol

FIS Stamp

Internat. Ski Verband FIS
Blochstrasse 2 / Postfach
CH-3653 Oberhofen

FIS Homologation Responsible

Hermod Bjørkestøl

Date of Issue

0412 2003

Valid until

0106 2009